



VLAAMSE VISVEILING nv  
ZEEBRUGGE & OOSTENDE



# ***HANDS-ON THUISKOOP SYSTEEM***

NV VLAAMSE VISVEILING  
STEDELIJKE VISMIJN NIEUWPOORT

June - 2018  
Versie 1.2

**Auteur**  
Mark SMET



Aucxis Trading Solutions cvba  
Zavelstraat 40, 9190 Stekene, België  
Tel +32 (0)3 790 17 17  
Fax +32 (0)3 790 17 18

# 1. GENERAL

## 1.1 AIM OF THIS DOCUMENT

This document is a basic handbook explaining the use of the KOA Thuis koper (*Home-purchaser*) software.

## 1.2 GENERAL

The KOA Thuiskoop module is the client application used by purchasers to buy remotely through the NV Vlaamse Visveiling (*NV Flemish Fish Auction*) and Stedelijke Vismijn Nieuwpoort (*the Nieuwpoort Fish Market*) auction systems.

In principle, it doesn't matter which internet provider is used for the Thuis koper application. It is possible to register multiple users (home purchasers) (from the same public IP address). The Thuiskoop module can only be launched once per PC (Windows user).

## 1.3 INSTALLATION (SETUP)

The Thuiskoop application will initially be made available as a 'setup' file on the welcome page of the website <http://www.vlvis.be> (via http download). After executing this setup, the user can register with the Thuiskoop system for the first time, using the account (registration code and PIN code) obtained. Any software updates required will be implemented automatically by the Thuiskoop system itself.

## 1.4 REGISTER

Once the Thuis koper module has been launched, the purchaser should register with the auction system for the first time. The following screen will be opened for this purpose:

<b>Remote Buyer module</b> v3.7.0.0		<b>NIEUWPOORT</b> 	
	F2 : OK		F3 : SETTINGS
	F10 : CANCEL		Test
LOGIN	<input type="text"/>		
PINCODE	<input type="text"/>		

### Account (registration code & PIN code)

A combination of registration code and PIN code is registered in the Thuiskoop system central database per Thuiskoop system. These details are required for registration, together with the **activation code** that users will need to activate their computer (PC or laptop) on a once-only basis the first time the system is used.

### Registration:

After entering the newly received registration code and PIN code, the user can use his mouse to click on 'OK' (or press 'F2');

In the event of an invalid registration, the user will receive a message explaining why the registration was unsuccessful.

The first time a home purchaser registers on a computer, he should also enter his **activation code** and click on 'OK'.

### Version check:

Following the user's successful registration, the main screen will open. The version of the application is then checked. If a version update is required or recommended, the user will receive a message about this. If a version update is recommended, the user can choose whether to download the version update or ignore this. In this case, the application will be launched in the version currently installed.

If a version update is **required**, the user can choose whether to download the version update or ignore this. In the latter case, the Thuiskoop application will close.

## 1.5 SETTINGS

The 'Settings' screen can be opened via the registration screen. The 'Settings' screen is intended specifically for making changes to registration and/or personal audio settings.

The following settings can be changed:

- Internet / LAN: Internet
- Public IP-address(es) / Thuiskoop system domain names (set by the system as a default)
- Local IP-address(es) / domain names (only for local users)
- Language (Dutch / French / English / German)
- Audio settings (settings for loudspeaker and microphone devices (headset/speakers))

## 1.6 STATUS

Following successful registration with the Thuiskoop system, the application will check the quality of the connection to the Thuiskoop system at regular intervals.

The line status is displayed in two fields at the bottom left of the status bar.

- Recent line status
- Average status

18/03/2013 9:23:25    23ms    53ms    Het Vismijntje    ( Brauwers )

The line status is represented by a colour and a time indication. The following statuses can be displayed:

- Good connection        : -Green
- Medium connection     : -Yellow
- Poor connection        : -Red
- No connection         : -Grey

## 1.7 CHANGING YOUR PIN CODE

It is possible for a user to change the PIN code initially received directly after registration. A screen is displayed for this, on which the user needs to provide the following details:

- Current PIN code
- New PIN code
- Confirm new PIN code

Settings

NIEUWPOORT VLV

F2: OK F12: CANCEL DEFAULT SETTINGS

Connection Audio Pincode

the auction system. The new pincode has to be put in twice for control purpose

CURRENT PINCODE:

NEW PINCODE:

CONFIRM NEW PINCODE:

Change pincode

The user can only change his PIN code if all the details were entered correctly. Once the user has chosen 'Change PIN code', further confirmation will be received once the PIN code has actually been registered in the Thuiskoop system. New PIN codes become valid straight away, i.e. also if a user wants to change his PIN code again.

The PIN code should satisfy the following conditions:

- Minimum of '0', maximum of '8' characters long (it can also remain empty)
- Can contain only numeric and alphanumeric characters

## 1.8 MAIN SCREEN

### 1.8.1 MAIN CLOCKS

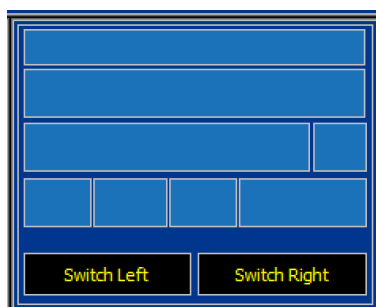
The main screen in the Thuiskoop application typically has the following layout:



There are two main clocks (clock faces to the left and right) and one monitoring clock (clock-switch window). An auction clock is linked to each main clock. Each main clock has its own specific keyboard shortcuts to make a purchase.

### 1.8.2 MONITORING CLOCK

The 'Monitoring Clock' window shows the current auction details for the clock that is NOT selected as main clock.



You can switch the monitoring clock with a main clock using the 'Switch Left' and 'Switch Right' buttons.

## PURCHASER SELECTION

During registration, the user will receive the purchasers (or sub-purchasers) for his account. The various purchasers (or sub-purchasers) are shown in the Purchaser Selection Table at the top of the main screen:

The purchasers (a maximum of 8) are shown in an overview. The main purchaser (SUB 0) always appears in the top left and is coloured green. The user can activate purchasers or sub-purchasers during the auction process (purchaser field turns green). The selected purchaser will be activated upon the next 'intention to purchase'.

0-Carrefour (1021)	1-Corfish (1025)	2-Nijf (1100)	3-Heiploeg (1067)
4-Neptunus (1098)	5-Delvaux (1127)	6-Marine Harve (1108)	

The user can activate the desired purchaser as follows:

- Click on the overview of available purchasers with the mouse
- Using the keyboard shortcut set as a standard:

Defined keys on the keyboard's numeric key pad.

Press 'Delete' : SUB 1  
Press 'End' : SUB 2  
Press 'Pg Dn' : SUB 3  
Press 'INS' : SUB 4  
Press 'Home' : SUB 5  
Press 'Pg Up' : SUB 6

## 1.10 INFORMATION SCREEN

The information window (middle window) enables the user to view the anticipated supply, the actual supply and the user's own transaction for the various auction locations. This can be done before, during or after the auction process. The user can use his mouse to navigate through the various menus.

Location	Menu Item	Start Date	End Date
Zeebrugge	Expected Supply by vessel	28/10/2016	31/10/2016
	Expected Supply by species	28/10/2016	31/10/2016
	Own Transactions	24/10/2016	26/10/2016
	Summary own Transactions	24/10/2016	26/10/2016
	Expected Supply by vessel	28/10/2016	31/10/2016
	Expected Supply by species	28/10/2016	31/10/2016
Oostende	Expected Supply by vessel	28/10/2016	31/10/2016
	Expected Supply by species	28/10/2016	31/10/2016
	Own Transactions	24/10/2016	26/10/2016
Nieuwpoort	Expected Supply by vessel	28/10/2016	31/10/2016
	Expected Supply by species	28/10/2016	31/10/2016
	Own Transactions	24/10/2016	26/10/2016

## 1.11 PURCHASING

An 'intention to purchase' is always created using the purchase keys for the relevant main clock.

Set purchase keys on the keyboard :

Left main clock: Function keys    Right main clock: (with numeric keypad active)

Press 'F1': 1 crate            Press '1': 1 crate  
 Press 'F2': 2 crates         Press '2': 2 crates  
 Press 'F3': 3 crates         Press '3': 3 crates  
 Press 'F4': 4 crates         Press '4': 4 crates  
 Press 'F5': 5 crates         Press '5': 5 crates  
 Press 'F6': 6 crates         Press '6': 6 crates  
 Press 'F7': 7 crates         Press '7': 7 crates  
 Press 'F8': 8 crates         Press '8': 8 crates  
 Press 'F9': 9 crates         Press '9': 9 crates  
 Press 'F10': All    Press '+': All  
 Press 'R' (letter): Rest    Press '0': Rest  
 Press 'CTRL-left': AUDIO        Press 'ENTER': AUDIO

In order to create a valid 'intention to purchase', the following conditions must be satisfied:

- The connection with the system must be active and its status must be at least 'moderate' (yellow or green).
- The main clock works according to the 'Dutch auction' principle. In other words, the price will drop.
- The purchaser must be authorised to purchase (monitoring purchasers cannot buy).

If a purchaser is blocked or set as a monitoring purchaser, the following symbol will be displayed:



An 'intention to purchase' is always created for the active purchaser ('purchaser displayed in green'). If the 'intention to purchase' could be validated by the auction clock as the winning offer, the purchaser name will appear in the central purchaser bar on the main clock. If a transaction is made through the auction clock, this will immediately be displayed in the window next to the clock-switch window (transaction grid).

LOC	PRODUCT	SIZE	PRES.	Q	#B	KG	PRICE	BUYER
OOS	ZEEBARBEEL	(2) 250 - 5	OG	E	1	20	€ 8,41	SIRENES
OOS	ZEEBARBEEL	(1) + 500	OG	E	1	20	€ 9,47	W & A
OOS	ZEEBARBEEL	(1) + 500	OG	E	1	16	€ 9,21	DETROYER
OOS	ZEEBARBEEL	(1) + 500	OG	E	1	20	€ 9,09	HORECA
OOS	ZONNEVIS	(5) - 300	GG	E	1	3	€ 4,41	PROVOST

Transaction grid

## 1.12 EXTRANET

Extranet provides access to the web portal for the central auction system. The user can then log in using his own website account to view or download general details or personal information (e.g. invoices).

Please note during use:

After the 'Extranet' has been launched, focus will no longer be on the Thuiskoop application and you will therefore be unable to place any bids!

## 1.13 SUPPLY

The 'Supply' button can be used to view supply information per location and additionally to sort, select lots, mark items and even place a pre-bid (a preliminary bid) before the auction starts. The information can then be printed on a standard printer.

Suppl.	Lot	Product	Size	Pres.	Q	#B	Cont.	Rem.	Kg	PB_Price	PB_amount	PB_Gekocht	PB_Subbuyer	comment
Sessio : 022 Zeebrugge BLOK Zeebaars3 zee														
BR22	87	Bass	1 - 2	NOT TRIMME	A	2	20	33	73	0	0	0	0	0
Sessio : 060 Zeebrugge ROG zee														
DVA24	85	RAY ROUGH	1 - 3 Rog	NOT TRIMME	A	2	23	11	57	0	0	0	0	0
DVA26	786	Blonde Ray	+ 5	TRIMMED	A	10	35	1072	1422	0	0	0	0	0
DVA26	823	Blonde Ray	3 - 5	TRIMMED	A	45	35	31	1606	0	0	0	0	0
DVA26	824	Blonde Ray	1 - 3 Rog	TRIMMED	A	11	35	16	401	0	0	0	0	0
DVA26	825	Blond Ray	1 - 3 Rog	TRIMMED	A	0	35	20	20	0	0	0	0	0
DVA26	826	RAY ROUGH	3 - 5	TRIMMED	A	0	35	28	28	0	0	0	0	0
DVA26	827	RAY ROUGH	1 - 3 Rog	TRIMMED	A	0	35	30	30	0	0	0	0	0
DVA26	828	Sandy Ray	3 - 5	TRIMMED	A	0	35	7	7	0	0	0	0	0
DVA26	829	Sandy Ray	1 - 3 Rog	TRIMMED	MARK	19	35	19	0	0	0	0	0	0
DVA26	830	ROG WILD	1 - 3 Rog	TRIMMED	DELETE SELECTED MARKS	22	35	22	0	0	0	0	0	0
DVA57	766	Blonde Ray	+ 5	TRIMMED	SELECT ALL	58	35	58	0	0	0	0	0	0
DVA57	778	Blonde Ray	3 - 5	TRIMMED	PRINT	82	35	82	0	0	0	0	0	0
DVA57	779	Blonde Ray	1 - 3 Rog	TRIMMED	PRINT	75	35	75	0	0	0	0	0	0
DVA57	780	Blond Ray	1 - 3 Rog	TRIMMED	A	7	35	6	251	0	0	0	0	0
DVA57	781	RAY ROUGH	+ 5	TRIMMED	A	0	35	38	38	0	0	0	0	0
DVA57	782	RAY ROUGH	3 - 5	TRIMMED	A	2	35	0	70	0	0	0	0	0
DVA57	783	RAY ROUGH	1 - 3 Rog	TRIMMED	A	0	35	33	33	0	0	0	0	0
DVA57	784	Blond Ray	- 1 Rog	TRIMMED	A	0	35	29	29	0	0	0	0	0
DVA57	785	ROG WILD	1 - 3 Rog	TRIMMED	A	0	35	38	38	0	0	0	0	0
DVA55	244	RAY ROUGH	1 - 3 Rog	NOT TRIMME	A	2	15	0	30	0	0	0	0	1 TOT 2
DVA55	243	RAY ROUGH	1 - 3 Rog	NOT TRIMME	A	1	15	18	33	0	0	0	0	2 TOT 3
Sessio : 061 Oostende HONDSHAAL oos														
B65	206	Spotted Dogfish	+ 500 Hand	NOT TRIMME	A	6	35	17	227	0	0	0	0	0
O190	708	Spotted Dogfish	+ 500 Hand	NOT TRIMME	A	4	35	10	150	0	0	0	0	0
Sessio : 061 Zeebrugge HONDSHAAL zee														
Z996	908	Spotted Dogfish	+ 500 Hand	NOT TRIMME	A	6	35	11	221	0	0	0	0	0
Z98	210	Spotted Dogfish	+ 500 Hand	NOT TRIMME	A	6	35	17	227	0	0	0	0	0
DVA55	736	Flounder	+ 25 cm	TRIMMED	A	1	15	23	38	0	0	0	0	0
DVA55	1000	Spotted Dogfish	+ 500 Hand	NOT TRIMME	A	1	25	20	45	0	0	0	0	0
DVA183	92	Spotted Dogfish	+ 500 Hand	NOT TRIMME	A	32	20	0	640	0	0	0	0	0
Sessio : 070 Oostende VIS oos														
N350	319	Sole	501 - 800	TRIMMED	E5	0	40	6	6	0	0	0	0	0
N350	320	Sole	401 - 500	TRIMMED	E5	0	40	8	8	0	0	0	0	0
N350	321	Sole	351 - 400	TRIMMED	E5	0	40	6	6	0	0	0	0	0
N350	322	Sole	301 - 350	TRIMMED	E5	0	40	3	3	0	0	0	0	0

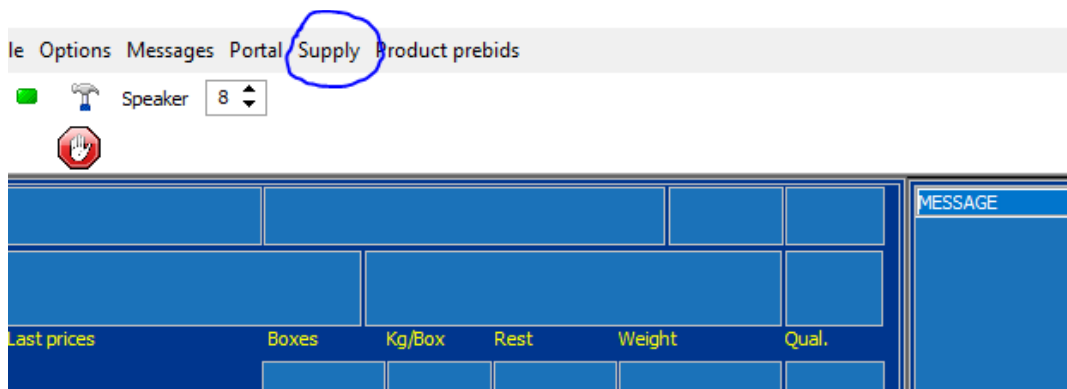
\*PB\_Gekocht = Prebid\_Bought

## 1.14 PREBIDS

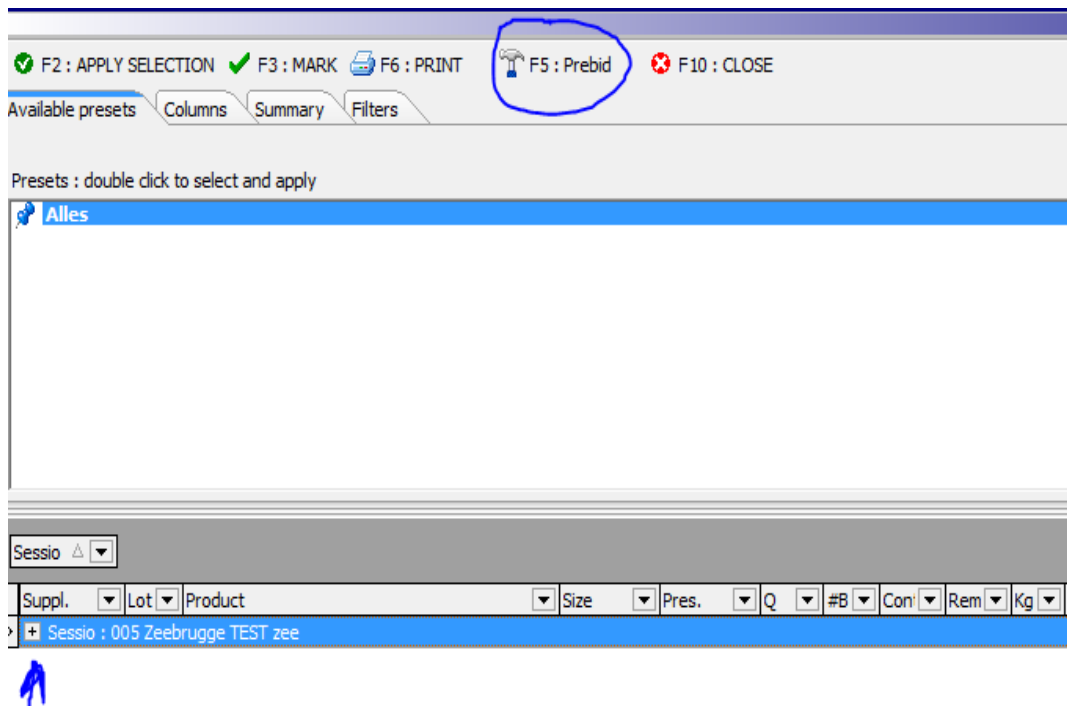
There are 2 ways to place a prebid, i.e. giving a purchase order without pressing the button when the clock runs.

### a. Placing a PREBID as soon as the actual supply is known and can be viewed online

Select SUPPLY in the bar at the top of the screen

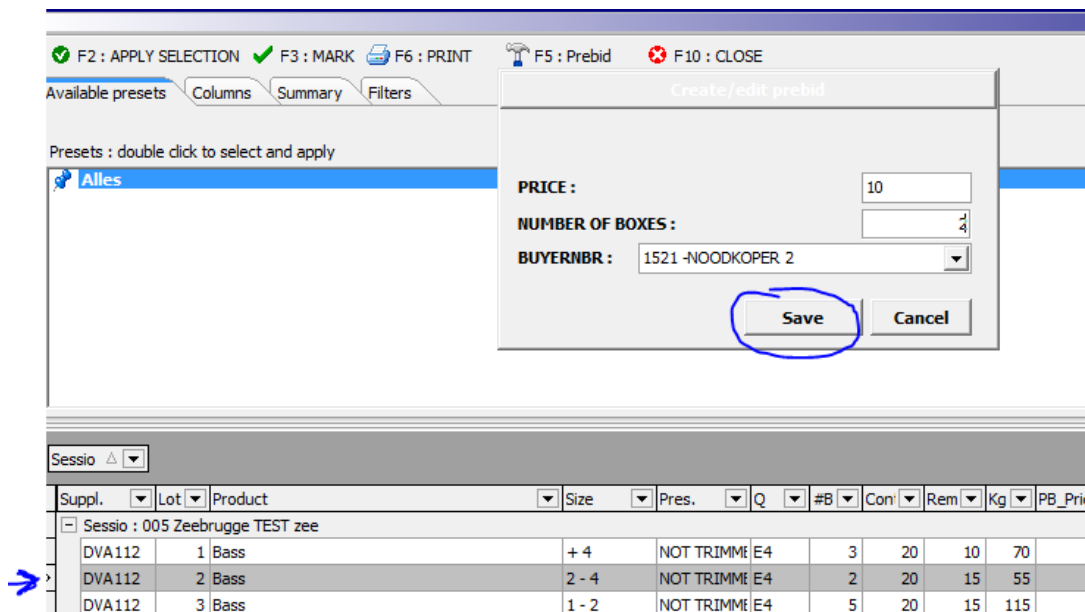


All sessions appear on the screen and you click on the "+" sign for the session you want to choose from



The available lots (sales catalogue) appear on the screen and you click on the lot on which you want to place a bid and confirm with F5 (or click on "PREBID F5" in the bar at the top of the screen)

A selection screen appears with the option to enter your price, the number of boxes and your buyer number (or sub buyer).



You validate with "SAVE" and your prebid is active.

The lot with an active prebid turns GREEN in the sales catalogue.

You can repeat this action as many times as you want for all active locations.

You can consult, change and cancel your prebids at any time.

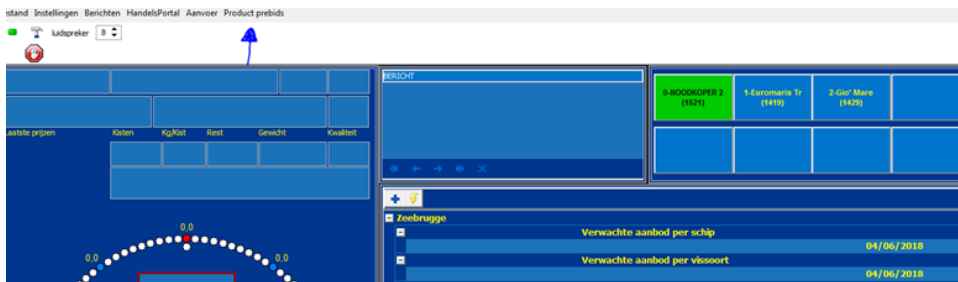


**a. Placing a prebid at any time, even if no actual supply is online**

You now also have the option to enter a prebid at any time without the actual supply being known.

**ATTENTION: your prebids are only valid for the FIRST AUCTION at the chosen location. After the auction, all outstanding prebids will be removed.**

You open the auction clock software and select PRODUCT PREBIDS in the bar at the top of the screen.



A screen appears where you select ADD (or press your F1 key)

You can now enter a prebid by making the following choices (click the arrow on the right in the selection bar for the available options)

**Create/edit prebid**

**LOCATION :** ZEEBRUGGE

**SPECIE :** Bass

**MIN QUALITY :** E4

**SIZE :** 1 - 2

ALL SUPPLIERS  SELECT SUPPLIERS

**AVAILABLE :** DVA24

**SELECTED :** Z188

LOCATION: your prebid is only valid for the chosen location

FISH SPECIES

(minimum) QUALITY: you enter the MINIMUM quality you want - everything that has a better quality score is also taken into account

ATTENTION: if you want lots with a general score A or E to be taken into account then you must enter E5 for the E quality and A15 for A quality

## SORTING

Selection VESSELS: if you want you can select a number of vessels, by default all vessels are taken into account

You select "SELECTION SUPPLIER"

The screenshot shows a web form titled "Create/edit prebid". It contains several dropdown menus for "LOCATION" (ZEEBRUGGE), "SPECIE" (Bass), "MIN QUALITY" (E4), and "SIZE" (1 - 2). Below these is a radio button selection for "ALL SUPPLIERS" and "SELECT SUPPLIERS", with the latter being selected and circled in blue. At the bottom, there are two columns: "AVAILABLE :" and "SELECTED :". The "AVAILABLE" column lists vessels: DVA24, DVA54, DVA55, N116, N350, N86, and O190. The "SELECTED" column lists Z188 and Z19. A blue circle highlights the right-pointing arrow button between the columns, with an arrow pointing to the "SELECTED" column.

You select a vessel by placing the cursor on the vessel in the left column and with the arrow at the top (in the middle of the screen) you add this vessel to your selection. You can repeat this as many times as you want.

You can undo the selection by working in reverse. You place the cursor on the vessel in your selection (on the right of the screen) and remove it from the selection by clicking on the bottom arrow.

## PRICE

WEIGHT you wish to purchase in KG. This weight will never be exceeded, i.e. if you want to buy 100 kg and you have already bought 2 boxes of 40 kg, a 3rd full box of 40 kg will no longer be taken into account, a residual box of less than 20 kg will be taken into account.

Buyer number (or sub-buyer)

## VALIDATE

**Create/edit prebid**

**LOCATION :** ZEEBRUGGE

**SPECIE :** Bass

**MIN QUALITY :** E4

**SIZE :** 1 - 2

ALL SUPPLIERS  SELECT SUPPLIERS

**AVAILABLE :**

- DVA24
- DVA54
- DVA55
- N116
- N350
- N86
- O190
- O316
- Z189

**SELECTED :**

- Z188
- Z19

**PRICE :** 10

**WEIGHT (KG) :** 50

**BUYER NO :** 1521 -NOODKOPER 2

**Save** **Close**

Once you have validated, the prebid appears in your list. You can change/cancel the prebid at any time by placing the cursor on the specific line and clicking on CHANGE (F2) or DELETE (F3)

Remote Buyer module v3.7.1.5 - Product prebids  
15213 - NOODKOPER 2

<input type="checkbox"/> F1 : ADD <input type="checkbox"/> F2 : EDIT <input type="checkbox"/> F3 : DELETE <input type="checkbox"/> F5 : REFRESH <input type="checkbox"/> F10 : CLOSE									
OC	SUB	PRODUCT	QUALITIES	SIZE	VESSELS	PRICE	KG	BOUGHT	
EE	1521	Bass	E4	1 - 2 Zeebaars	DVA55	€ 10,00	50		0
EE	1521	Atlantic Catfish	E5	+5		€ 2,00	100		0
EE	1521	Flounder	A6	+ 25 cm		€ 1,00	200		0

Close with EXIT (F10)

You can review your prebids at any time after opening your auction clock software by selecting product prebids (bar at the top of the screen).

## 1.15 MENTION OF SUSTAINABILITY

Adapting to an increasing public demand for sustainability, the Belgian fishing industry strives to become more sustainable. The Institute for Agricultural and Fisheries Research (ILVO) developed, in close collaboration with the Rederscentrale, an objective and scientifically based tool (Valduvis) that can measure and visualize the sustainability of fishing activities. Within the MaViTrans project

(Market Recognition for a Fishery in Transition), the information from the Valduvis tool is used to inform the market via a recognition on the auction clock.

This recognition shows which vessels are actively participating in the sustainability process of the Belgian fishing fleet and is only granted under certain conditions. This is displayed on the auction clock by a green coloured zone with the vessel number. If a vessel does not comply with the terms for recognition, the colour will remain as it is today. In addition the 'Visserij Verduurzaamt' logo will be visible on the sales tickets on the fish in the auction and on the sales overview left at the bottom near the vessel number. Lastly, the vessel number and the logo will also be displayed on the invoice.